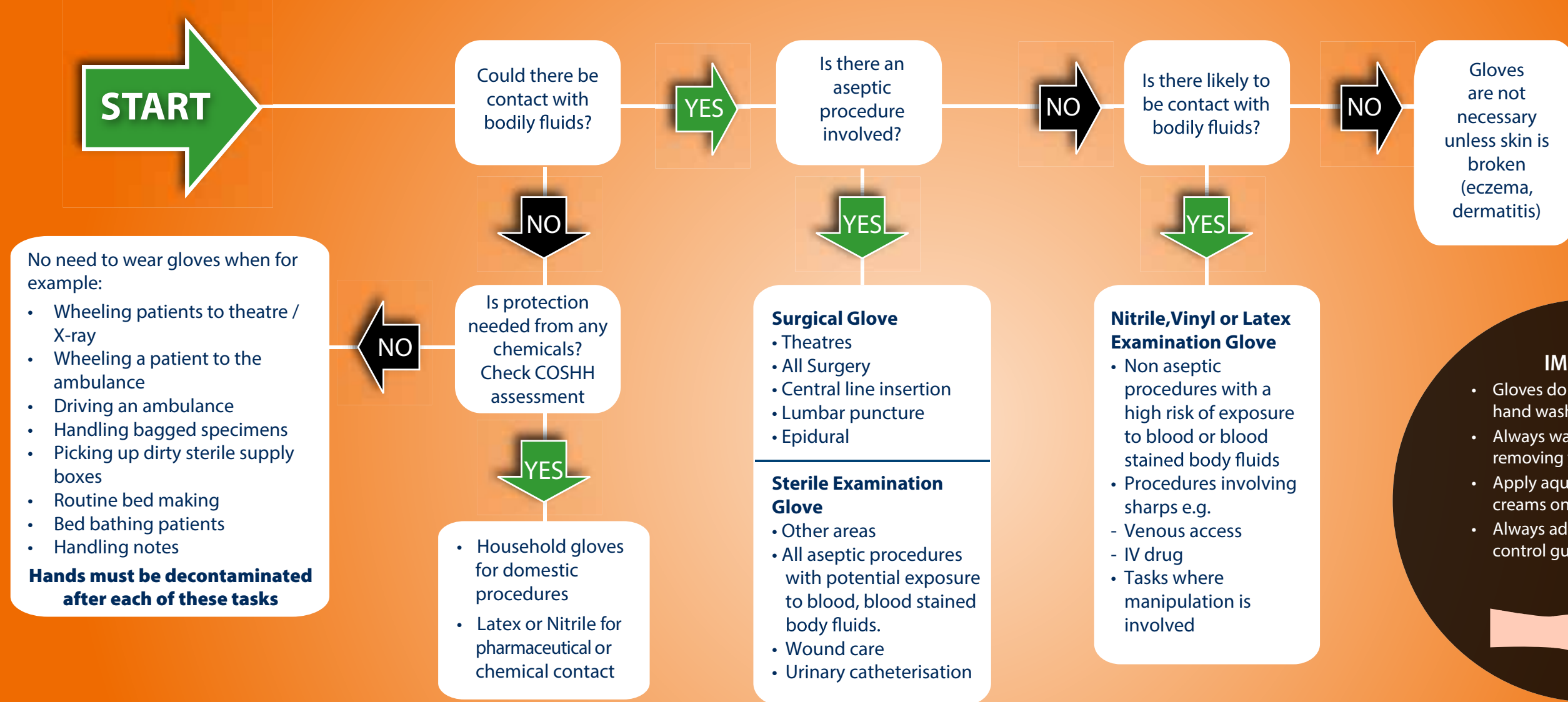


GLOVE SELECTION GUIDE

Gloves are available in a selection of materials, each with specific properties for specific applications. The correct glove choice can be made if a full and informed risk assessment is carried out.



HPC
Healthline



IMPORTANT

- Gloves do not replace good hand washing
- Always wash your hands after removing your gloves
- Apply aqueous based hand creams only
- Always adhere to infection control guidelines



INFECTION PREVENTION

Good infection prevention is central to medical practice. To achieve higher standards of clinical practice, especially when thinking about how to reduce the risk of cross-infection, it is necessary to comply with your local infection control policy. Safe practice should be uppermost in the minds of healthcare professionals when caring for patients.

ALLERGIES

- Natural Rubber Latex can cause allergic reactions in some individuals, including anaphylactic responses.
- Certain chemicals contained in Latex and Nitrile gloves: ZDBC and ZDEC can cause type IV skin irritation and contact dermatitis.



HPC Healthline UK Ltd
Colwood House,
158 Garth Road,
Morden, Surrey,
SM4 4LZ England
T 020 8335 5213 (OFFice)
T 020 8335 5252
E sales@healthline.co.uk
www.healthline.co.uk